

# Joetsu University of Education (Niigata)



To provide overseas students with necessary training in Japanese language and culture, in accordance with each student's interests.

## ■ Overview of the University and Joetsu City

### ① Outline of Joetsu University of Education

#### 1) Characteristics and History

In order to meet contemporary needs, Joetsu University of Education was established in 1978 as a national university which is aimed at promoting the theoretical and practical studies of school education. It consists of the Graduate School of Education, which mainly intends to provide advanced studies in school education for in-service teachers, and the College of Education, which offers undergraduate courses in teacher training.

In 2008, in accordance with the development of the Teaching Profession Graduate School System, the Professional Degree Program (Graduate School of Professional Teaching) was established in the Graduate School of Education.

This program is aimed at deepening students' knowledge and learning relating to the teaching profession, to acquire ability to deal with problems around school environments promptly.

#### 2) Number of Teachers and Students (as for May 2016)

Teachers: 148

Students: Undergraduates: 679

Graduate: 624



Joetsu City during the winter season

#### ② Number of international exchange (as for October 2016)

Foreign students: 42 (3countries)

Exchange agreements with overseas universities: 11 (7countries)

#### ③ Number of students in the Japanese Studies Program

year	total	Students in the Japanese Studies Program
2015	34	2
2014	33	2
2013	30	3

#### ④ Features of Joetsu City

Joetsu city has numerous historical and cultural assets. It is surrounded by impressive nature and is famous as one of Japan's snowy cities.

. It takes about 2 hours by Hokuriku Shinkansen: a bullet train from Tokyo.

## ■ Outline of the Program

#### ① Objective:

The main objective of the training of the Program is to learn Japanese Society and Japanese Culture. In parallel, the training plays a supplementary role to encourage the improvement of Japanese language proficiency of the students in the Japanese Studies Program.

#### ② Feature:

- To provide overseas students with necessary training in Japanese language and culture, in accordance with each student's interests.
- To provide curriculums with a cooperation of an academic advisor, considering each student's interests.



[The Front View of Joetsu University of Education]



③ **Number of students to be accepted:** 3  
(students with embassy recommendation 2  
students with university recommendation 1)

④ **Qualifications and conditions for applicants**

a) **Qualifications:** At the time of arrival in Japan, applicants is a student who has a enrolled in a faculty or department offering studies in the Japanese language and Japanese culture in a foreign university.

Freshmen at an above-mentioned university are not eligible to apply for this program.

b) **Japanese language proficiency:**

Applicants must be able to understand lectures, read reference materials, write papers, and make oral presentations.

The Japanese Language Proficiency Test N2 or the Practical Japanese Test Pre-B level or above.

⑤ **Flow and Goal:**

To research with under the academic advisors and Japanese language teachers, present an academic research achievements and submit an academic report.

⑥ **Period of study:**

From October 1, 2017 through September 30, 2018 Completion ceremony is scheduled for September.

⑦ **Contents:**

- Overseas students, registered as special auditors, can attend the following classes and acquire course credits after fulfilling certain requirements.

- After enrollment, students can also take other lectures not listed below, with the professor's permission.

Let's talk about the world  
Christmas in Australia



1) **Required Programs:**

Each semester consists of lessons of 15 weeks. All the classes are offered in Japanese.

**Subjects of College of Education:**

Japanese and Japanese cultural studies Seminar A·B/Japanese and Japanese Society 1·2/Seminar in Basic Intercultural Communication

**Japanese language Classes:**

Report Writing in Japanese A·B /Japanese Research Announcement A·B/Japanese Literature Subscription A·B

2) **Visit, subjects such as participatory local exchange:**

Academic Research of Japanese and Japanese Culture  
To set one's own research theme about Japanese language and culture under the guidance of research advisors and JSL advisors through the One-Year Japanese Studies Program., students are required to write a thesis/report on their research studies and make a presentation.

School visit

Visiting the University Attached Elementary School and Attached Junior High School, and other local schools.

3) **Other courses, electives, etc.:**

A semester consists of 15 weeks. 2 semesters par each year are offered.

Classes are all in Japanese.

Subjects of College of Education: Japanese Society : The Constitution of Japan/Japanese History/Jurisprudence Reading

Japanese Culture : Culture and Expressions of Calligraphy/Transcribed Calligraphy1·2/Martial Art

Education for International Understanding : Intercultural Communication

Japanese Literature :Japanese Literature Reading B/Japanese Literature Seminar B

Japanese Geography and History : Study of Japanese History A/Introduction of World History

Education in Japan : :Japanese Language Reading C/Introduction to Child Education and Early Childhood Care

School Subjects : School Management: Study of Pedagogy/Outline of Extracurricular Activities in Primary and Secondary Education /Counselling in school education



Cultural experience with community  
Traditional performing arts  
'Harukoma'

⑧ **Annual Events (Temporary)**

**October**

Orientation for foreign students enrolled in October

University Festival

**November**

Lunch meeting with the President

Let's talk about "WORLD"

Taking the practical Japanese test:J.TEST

Exchanging views and ideas with foreign students

Traffic safety lessons for foreign students

**February**

Classroom visitations in the University attached

Schools for short-term international students

**March**

International Gathering

Ski experience

**April**

Orientation for foreign students enrolled in April

Blossom viewing

**July**

Tanabata: Star Festival tea ceremony

**August**

Field trip for Japanese culture and history

experience, cultural exchange (one-night tour)

Achievement presentation implemented by short-term international students

**September**

Short-term foreign students Diploma Ceremony

Blossom viewing



⑨ Guidance

• Academic advisor:

Each international student has his/her own academic advisor who gives guidance on course selection and research instructions.

• Japanese language instructors:

Japanese language instructors will help your difficulty in language learning and improve your Japanese.

• Advisors:

The staff of the international exchange office will assist you in leading a comfortable on-campus & off-campus life including your study during your stay in Joetsu.

⑩ Completion of the Program

For a student who completes the below completion requirements, a completion certificate will be issued.  
1) For a students who complete more than 12 classes including required classes and electives , the certificate will be issued.  
2) For a students who present an academic research achievements and submit an academic report, the certificate will be issued.

Student achievement  
short presentation



■ Accommodation

The university has an international dormitory for foreign students, foreign researchers and Japanese students. Fifteen one-bedroom rooms and three rooms for families are available for foreign students.

Equipment for single room :

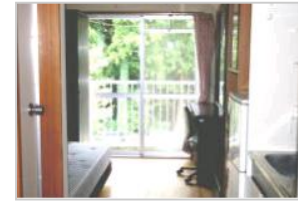
kitchenette, toilet, hot water supply facilities, heating and cooling air conditioner, single bed, desk with drawers, swivel chair, bookcase, wardrobe, hanging bookshelf, cupboard, refrigerator and desk lamp.

Equipment for couple room :

Full kitchen, unit bathroom, toilet, hot water supply facilities, heating and cooling air conditioner, 2 single beds, desk with drawers, swivel chair, bookcase, reception table and chair, dining table and chair, cupboard, wardrobe, entrance cabinet, washing machine, dryer, refrigerator, desk lamp and closet.



[ Outside view of International Dormitory ]



[ Inside view of Single room ]

■ Follow-up for graduates

We provide information to all students after completion, with foreign student networks and monthly news letters.

Ski experience in Myoko Kogen



■ Contact

International Exchange Section of the Research Cooperation Division,  
Joetsu University of Education  
1, Yamayashiki - machi, Joetsu - shi, Niigata, Japan, 943-8512.  
Phone : +81-25-521-3299  
Fax : +81-25-521-3621  
E-mail : ryugaku@juen.ac.jp

Joetsu University of Education Home page :  
<http://www.juen.ac.jp/>

Japanese Students Course guide :  
<http://www.juen.ac.jp/050about/030internat/040recep/files/2014-0129-1500.pdf>