



- ③ **Number of students to be accepted:** 3  
(students with embassy recommendation 2  
students with university recommendation 1)

④ **Qualifications and conditions for applicants**

**a) Qualifications :**

At the time of arrival in Japan, applicants are students who have enrolled in faculties or departments offering studies in the Japanese language and Japanese culture in foreign universities.

Freshmen at an above-mentioned university are not eligible to apply for this program.

**b) Japanese language proficiency :**

The Japanese Language Proficiency Test N2 or the Practical Japanese Test C level or above.

**c)** Applicants must be able to understand lectures, read reference materials, write papers, and make oral presentations.

⑤ **Flow and Goal:**

To research with under the academic advisors and Japanese language teachers, present an academic research achievements and submit an academic report.

⑥ **Period of study :**

From October 1, 2019 through September 30, 2020.  
Completion ceremony is scheduled for September.

\*If you hope to return home before the completion of your study, please consult it in advance.

⑦ **Contents :**

• After enrollment, students can also take other lectures not listed below, with the professor's permission.

**1) Required Programs :**

Each semester consists of lessons of 15 weeks. All the classes are offered in Japanese.

**Subjects of College of Education :**

Japanese and Japanese cultural studies Seminar  
A・B/Japanese and Japanese Society 1・2/  
Seminar in Basic Intercultural Communication

**Japanese language Classes :**

Report Writing in Japanese A・B / Japanese  
Research Announcement A・B / Japanese  
Literature Subscription A・B

**2) Visit, subjects such as participatory local exchange :**

School visit

Visiting the University Attached Elementary School and Attached Junior High School, and other local schools.

**3) Contents of research**

To set students' own research theme about Japanese language and culture under the guidance of research advisors and JSL advisors through the One-Year Japanese Studies Program, students are required to write a thesis/report on their research studies and make a presentation.



*Let's talk about  
the world*



**Cultural Experience with community**

**4) Opportunities to study with Japanese students**

• Overseas students, registered as special auditors, can attend the classes with Japanese students and acquire course credits after fulfilling certain requirements.

• In Academic Research of Japanese and Japanese Culture A / B, students belong to their own seminar and study with Japanese students.

**5) Other courses, electives, etc. :**

A semester consists of 15 weeks. 2 semesters per each year are offered. Classes are all in Japanese.

Subjects of College of Education

Japanese Society : The Constitution of Japan /

Japanese History / Jurisprudence Reading

Japanese Culture: Culture and Expressions of

Calligraphy / Transcribed Calligraphy 1・2 / Martial Art

Education for International Understanding : Intercultural

Communication / Japanese Painting Expression /

Sculpture I

Japanese Literature : Japanese Literature Reading

B/Japanese Literature Seminar B

Japanese Geography and History : Study of

Japanese History A / Introduction of World History

Education in Japan : Japanese Language Reading

C / Introduction to Child Education and Early

Childhood Care

School Subjects

School Management: Study of Pedagogy / Outline

of Extracurricular Activities in Primary and

Secondary Education / Counselling in school

education



*Blossom viewing*

## ⑧ Annual Events (Temporary)

### October

Orientation for foreign students enrolled in October  
University Festival

### November

Lunch meeting with the President  
Let's talk about "WORLD"  
Taking the practical Japanese test : J.TEST  
Traffic safety lessons for foreign students

### December

Exchanging views and ideas with foreign students

### February

Classroom visitations in the University attached  
Schools for short-term international students

### March

International Gathering  
Ski experience

### April

Orientation for foreign students enrolled in April Blossom viewing

### May

Lunch meeting with the President

### July

Tanabata: Star Festival tea ceremony

### August

Field trip for Japanese culture and history experience, cultural exchange (one-night tour)  
Achievement presentation implemented by short-term international students

### September

Short-term foreign students Diploma Ceremony

## ⑨ Guidance

Each international student has his/her own academic advisor who gives guidance on course selection and research instructions.

### • Japanese language instructors:

Japanese language instructors will help your difficulty in language learning and improve your Japanese.

### • Advisors:

The staff of the international exchange office will assist you in leading a comfortable on-campus & off-campus life including your study during your stay in Joetsu.

## ⑩ Completion of the Program

For a student who completes the below completion requirements, a completion certificate will be issued.

1) For a students who complete more than 12 classes including required classes, electives and Japanese language programs, the certificate will be issued.

2) For a students who present an academic research achievements and submit an academic report, the certificate will be issued.

## ■ Accommodation

The university has an international dormitory for foreign students, foreign researchers and Japanese students.

Fifteen one-bedroom rooms and three rooms for families are available for foreign students.

### Equipment for single room(5,900 yen per month) :

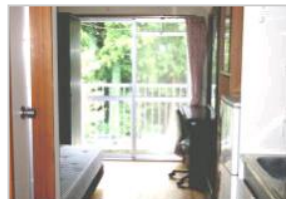
kitchenette, toilet, hot water supply facilities, heating and cooling air conditioner, single bed, desk with drawers, swivel chair, bookcase, wardrobe, hanging bookshelf, cupboard, refrigerator and desk lamp.

### Equipment for couple room (9,500 yen per month) :

Full kitchen, unit bathroom, toilet, hot water supply facilities, heating and cooling air conditioner, 2 single beds, desk with drawers, swivel chair, bookcase, reception table and chair, dining table and chair, cupboard, wardrobe, entrance cabinet, washing machine, dryer, refrigerator, desk lamp and closet.



[ Outside view of International Dormitory]



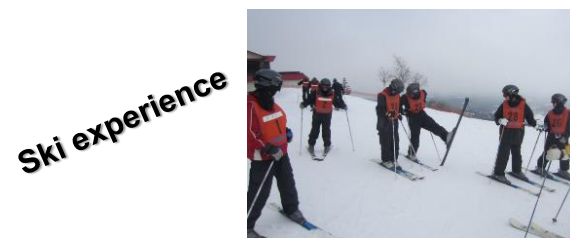
[ Inside view of Single room]

## ■ Follow-up for graduates

We provide information to all students after completion, with foreign student networks and monthly news letters.



Student achievement short presentation



Ski experience

## ■ Contact

International Exchange Section of the Research Cooperation Division,  
Joetsu University of Education  
1, Yamayashiki - machi, Joetsu - shi, Niigata, Japan, 943-8512.  
Phone: +81-25-521-3299  
Fax: +81-25-521-3621  
E-mail: ryugaku@juen.ac.jp

Joetsu University of Education Home page:  
<http://www.juen.ac.jp/>

Japanese Students Course guide:  
<http://www.juen.ac.jp/050about/030internat/040recep/index.html>